



Smoke Outlook

Central Idaho

8/26 - 8/27

Issued by [Wildland Fire Air Quality Response Program](#) on August 26, 2024 at 10:09 AM MDT

Special Statement

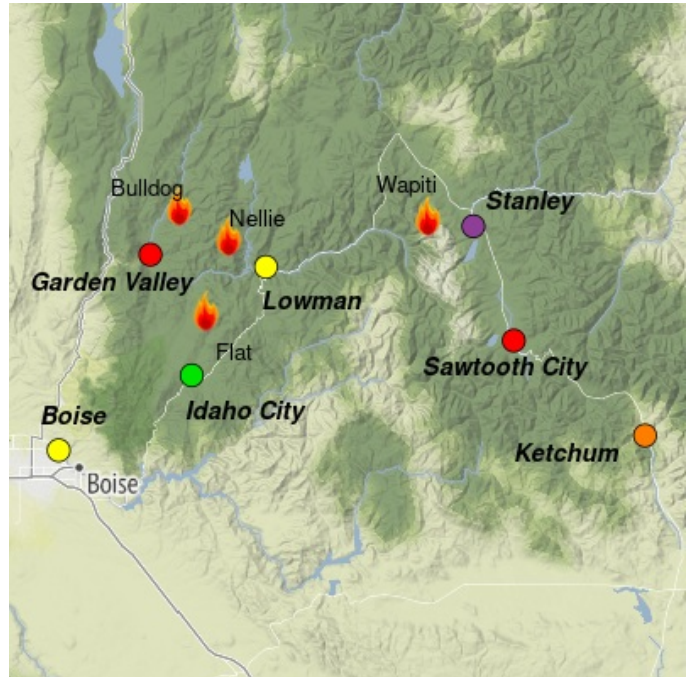
AIR QUALITY ALERT issued by Idaho DEQ.

Fire

The **Middle Fork Complex** is at 46,945 acres, the **Wapiti Fire** is at 68,124 acres, and the **Flat Fire** is at 3,734 acres. Temperatures continue to trend upward with decreasing humidities ahead of a dry cold front from tomorrow evening. Potential for wind gusts in the afternoon. This will allow fuels to burn more readily and support low to moderate rates of spread with some potential for spotting.

Smoke

Heaviest smoke impacts will be in valleys and low-lying areas near the immediate vicinity of the fire, especially in northern Sawtooth Valley. Moderate smoke impacts will be along HWY-75 from Stanley to Challis and the SH-17 corridor from Crouch/Garden Valley to Lowman. Today begins our warming and drying period which will allow for more smoke production than seen this past weekend. A dry cold front will pass tomorrow and create conditions for more widespread smoke impact as the week progresses.



Daily AQI Forecast* for Monday

Station	Yesterday hourly			Sun 8/25	Comment for Today -- Mon, Aug 26	Forecast*	
	6a	noon	6p			Mon 8/26	Tue 8/27
Boise					GOOD air quality today with potential periods of MODERATE in the afternoon.		
Idaho City					GOOD air quality with periods of disperse smoke, potentially MODERATE overnight.		
Ketchum					Generally USG conditions with periods of UNHEALTHY as smoke funnels south.		
Garden Valley					Generally UNHEALTHY, with slight variabilities due to fire activity.		
Stanley					UNHEALTHY to VERY UNHEALTHY, persistent throughout the day.		
Sawtooth City	No hourly data				Smoke channeling into southern Sawtooth Valley brings UNHEALTHY conditions.		
Lowman					MODERATE air quality conditions with periods of USG dependent on fire activity.		

Issued Aug 26, 2024 by Kati Chachere ARAT (cchachere@blm.gov)

Air Quality Index (AQI)	Actions to Protect Yourself
Good	None
Moderate	Unusually sensitive individuals should consider limiting prolonged or heavy exertion.
USG	People within Sensitive Groups* should reduce prolonged or heavy outdoor exertion.
Unhealthy	People within Sensitive Groups* should avoid all physical outdoor activity.
Very Unhealthy	Everyone should avoid prolonged or heavy exertion.
Hazardous	Everyone should avoid any outdoor activity.

***Disclaimer:** This forecast is based on fine particulates only; ozone is not included. Forecasts may be wrong; use at own risk. Use caution as conditions can change quickly. See your health professional as needed. Smoke sensitive groups should take appropriate precautions.

Additional Links

[Middle Fork Complex \(Bulldog, Nellie\)](#) -- <https://inciweb.wildfire.gov/incidentinformation/idbof-middle-fork-complex-fire-bulldog-nellie-anderson>
[Wapiti Fire](#) -- <https://inciweb.wildfire.gov/incident-information/idbof-wapiti-fire>

[Flat Fire](#) -- <https://inciweb.wildfire.gov/incident-information/idids-2024-flat>
[IDEQ Smoke Blog](#) -- <https://idsmoke.blogspot.com>



Issued by Interagency Wildland Fire Air Quality Response Program -- www.wildlandfiresmoke.net
Central Idaho Updates -- <https://outlooks.wildlandfiresmoke.net/outlook/d58217e9>
*Smoke and Health Info -- www.airnow.gov/air-quality-and-health